

## Model Name:GA-G41MT-USB3

Revision 1.3

SHEET

TITLE

01	COVER SHEET
02	BLOCK DIAGRAM
03	BOM & PCB MODIFY HISTORY
04	P4_LGA775_A
05	P4_LGA775_B,D
06	P4_LGA775_C
07	P4_LGA775_E,F,G,H
08	G41_HOST
09	G41_DDRIII
10	G41_PCI E, DMI
11	G41_VGA
12	G41_GND
13	G41_PWR
14	PCI EXPRESS*16 SLOT
15	DDR3 CHANNEL A
16	DDR3 CHANNEL B
17	DDR3 TERMINATION
18	ICH7 PCI, USB, DMI, LAN
19	ICH7 IDE, GPIO, SATA, CTRL
20	ICH7 VCC, GND
21	CK505 CLOCK.
22	PCI SLOT 1,PCIE*1,2
23	IDE/FLOPPY/F_USB/R_USB
24	ITE 8718 GB
25	COM_LPT
26	CI,HWM,KB/MS,DUALBIOS
27	HD AUDIO ALC889

SHEET

TITLE

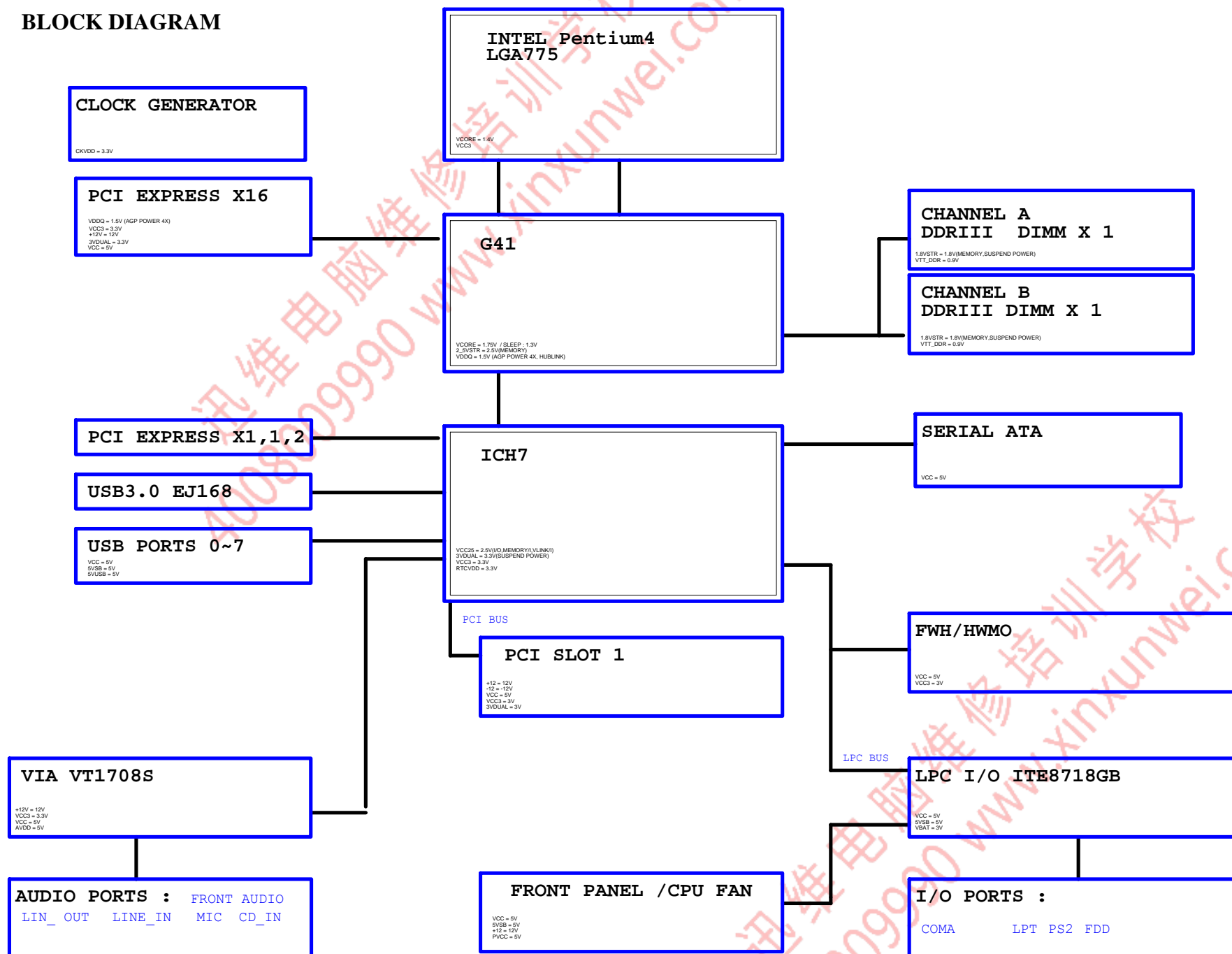
28	REAR AUDIO JACK
29	DISCRETE POWER
30	VCORE PWM_ISL6312
31	ATX, OTHERS POWER
32	FRONT PANEL
33	REALTEK RTL8111E
34	DVI
35	USB3.0-EJ168

Gigabyte Technology

Cover Sheet

Size	Document Number	Rev
Custom	GA-G41MT-USB3	1.3
Date:	Friday, February 18, 2011	Sheet 1 of 35

### BLOCK DIAGRAM



**Version: 1.3**

2010/12/15

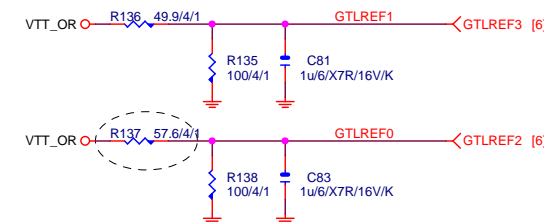
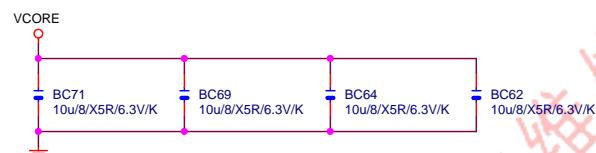
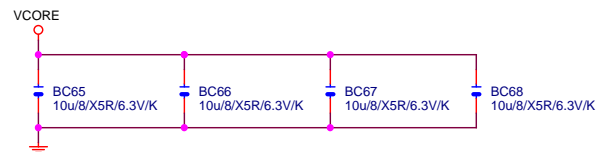
[illegible]

DATE \_\_\_\_\_

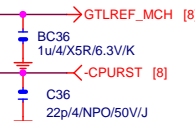
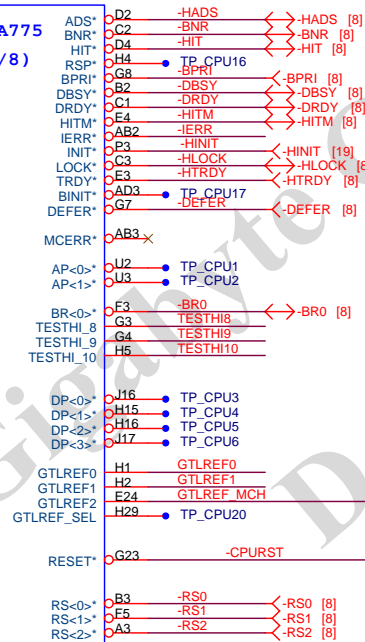
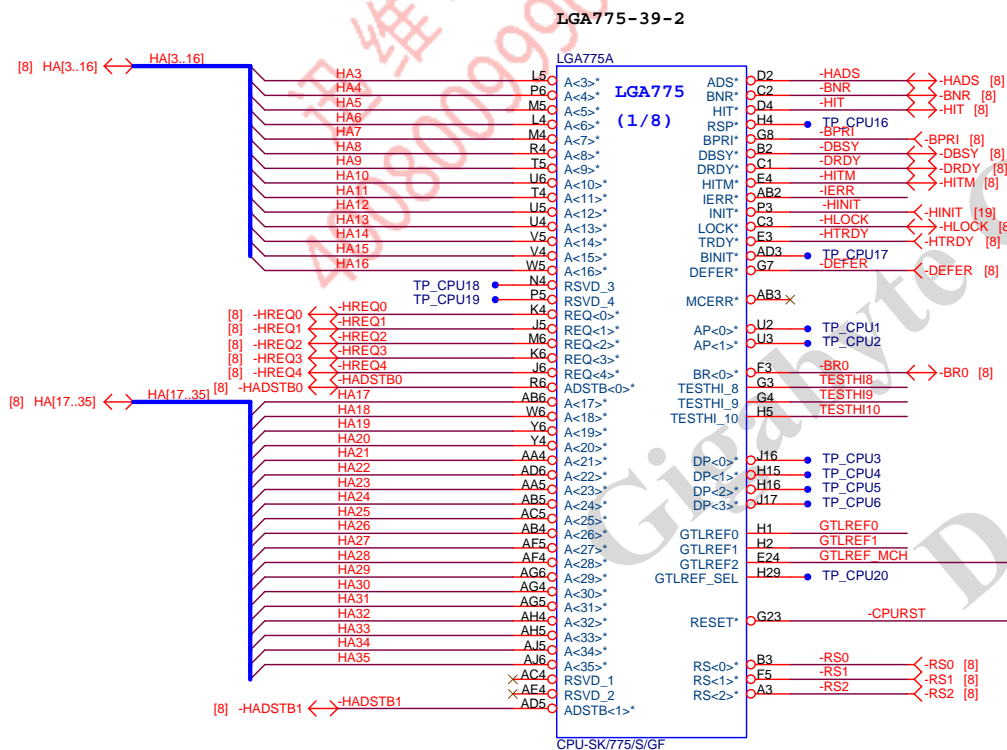
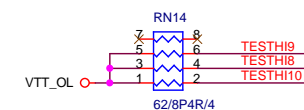
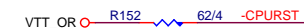
Change	Item
1	1
2	2
3	3
4	4
5	5
6	6
7	7
8	8
9	9
10	10
11	11
12	12
13	13
14	14
15	15
16	16
17	17
18	18
19	19
20	20
21	21
22	22
23	23
24	24
25	25
26	26
27	27
28	28
29	29
30	30
31	31
32	32
33	33
34	34
35	35
36	36
37	37
38	38
39	39
40	40
41	41
42	42
43	43
44	44
45	45
46	46
47	47
48	48
49	49
50	50
51	51
52	52
53	53
54	54
55	55
56	56
57	57
58	58
59	59
60	60
61	61
62	62
63	63
64	64
65	65
66	66
67	67
68	68
69	69
70	70
71	71
72	72
73	73
74	74
75	75
76	76
77	77
78	78
79	79
80	80
81	81
82	82
83	83
84	84
85	85
86	86
87	87
88	88
89	89
90	90
91	91
92	92
93	93
94	94
95	95
96	96
97	97
98	98
99	99
100	100

Reason

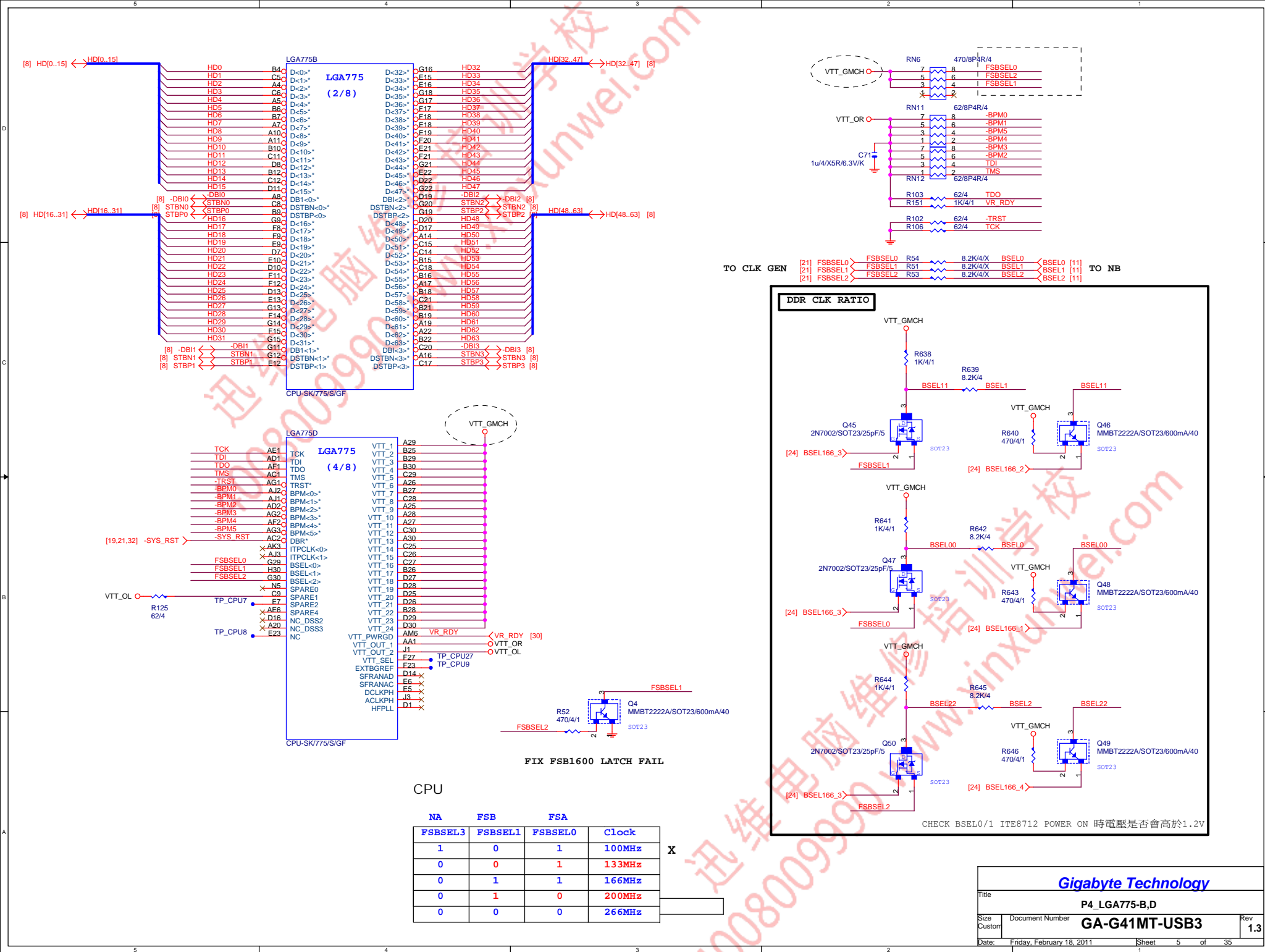
[illegible]

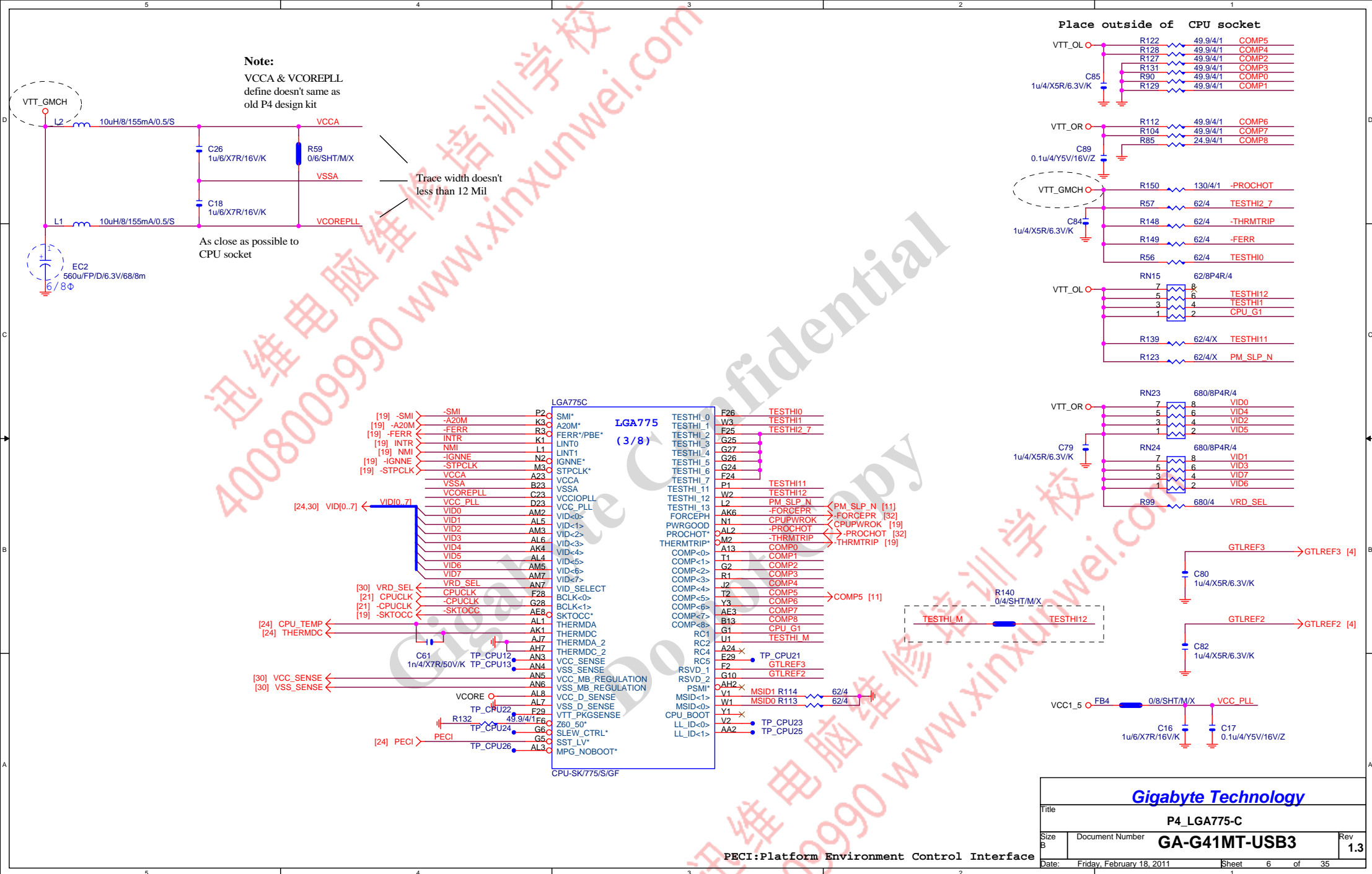


中間値0.9V



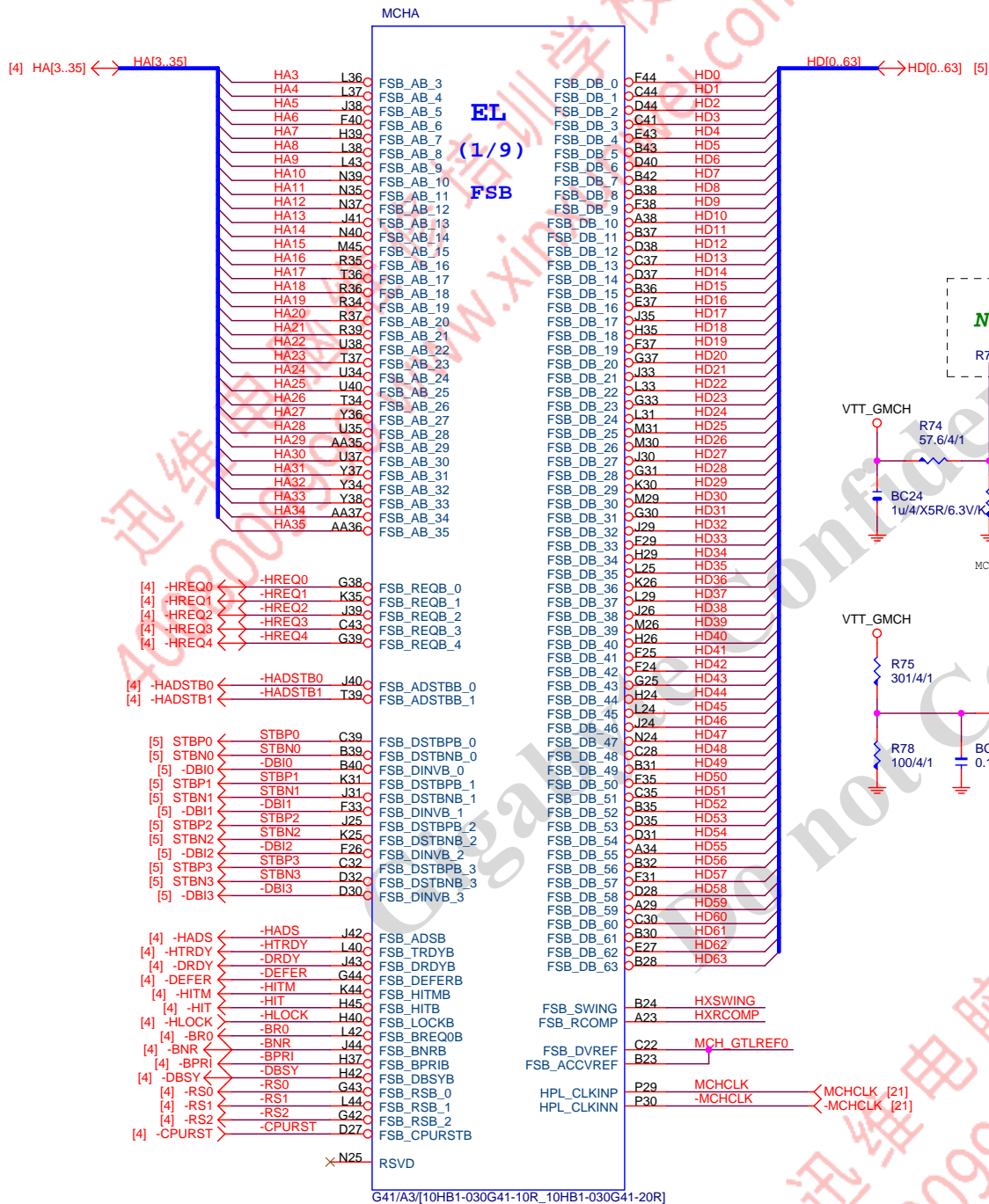
<p align="center"><b><i>Gigabyte Technology</i></b></p>				
<p>Title <b>P4_LGA775-A</b></p>				
Size B	<p>Document Number <b>GA-G41MT-USB3</b></p>			Rev 1.3
Date:	Friday, February 18, 2011	Sheet	4	of 35



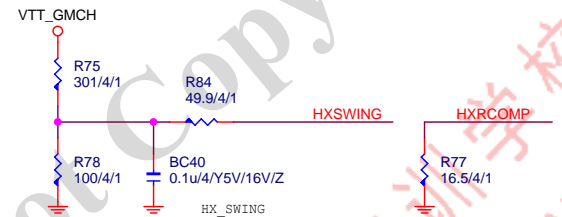
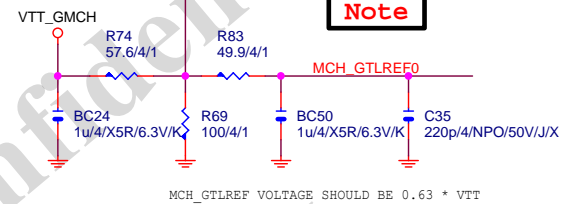






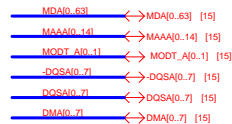


Not used for CoreTM2 Duo and Wolfdale

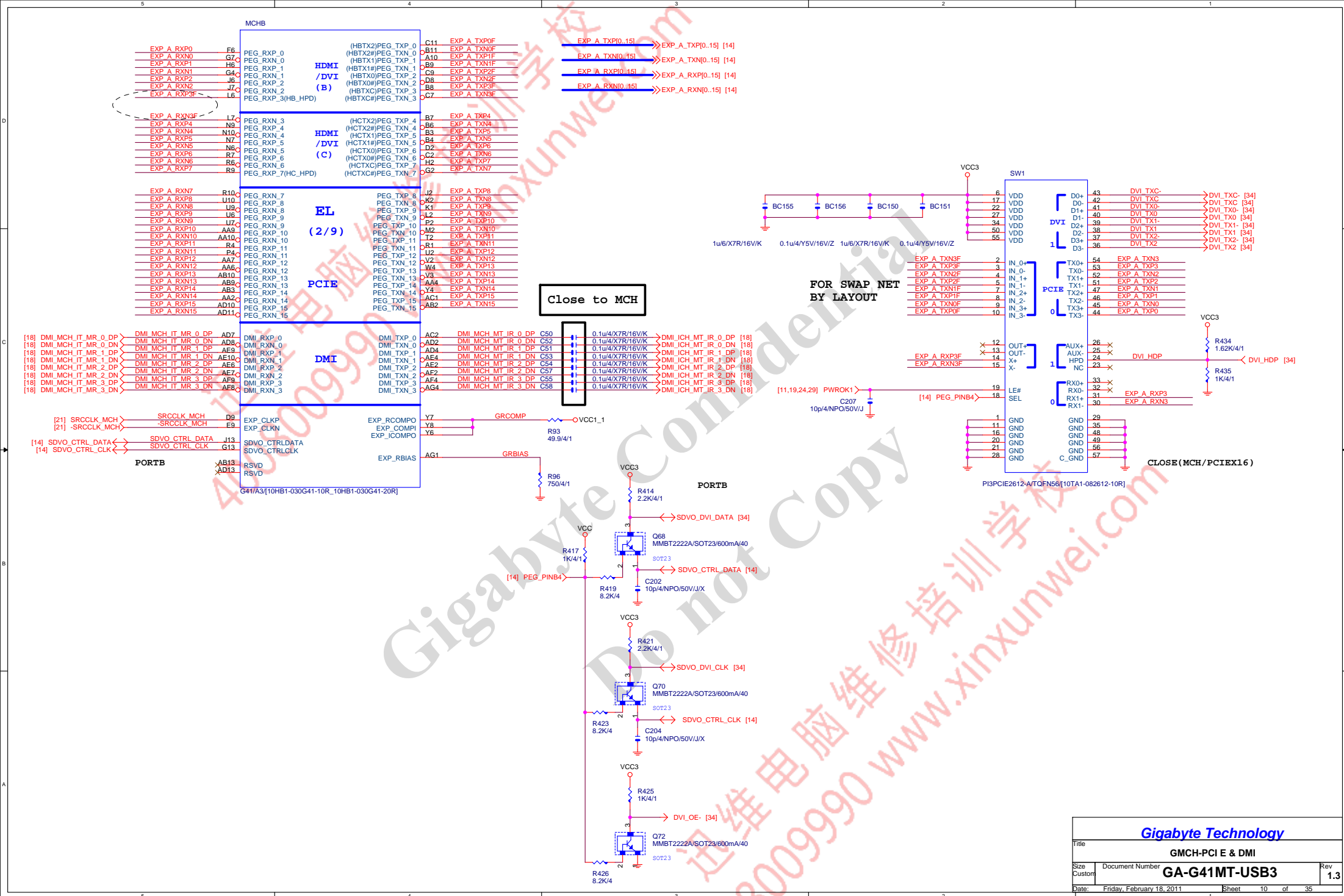


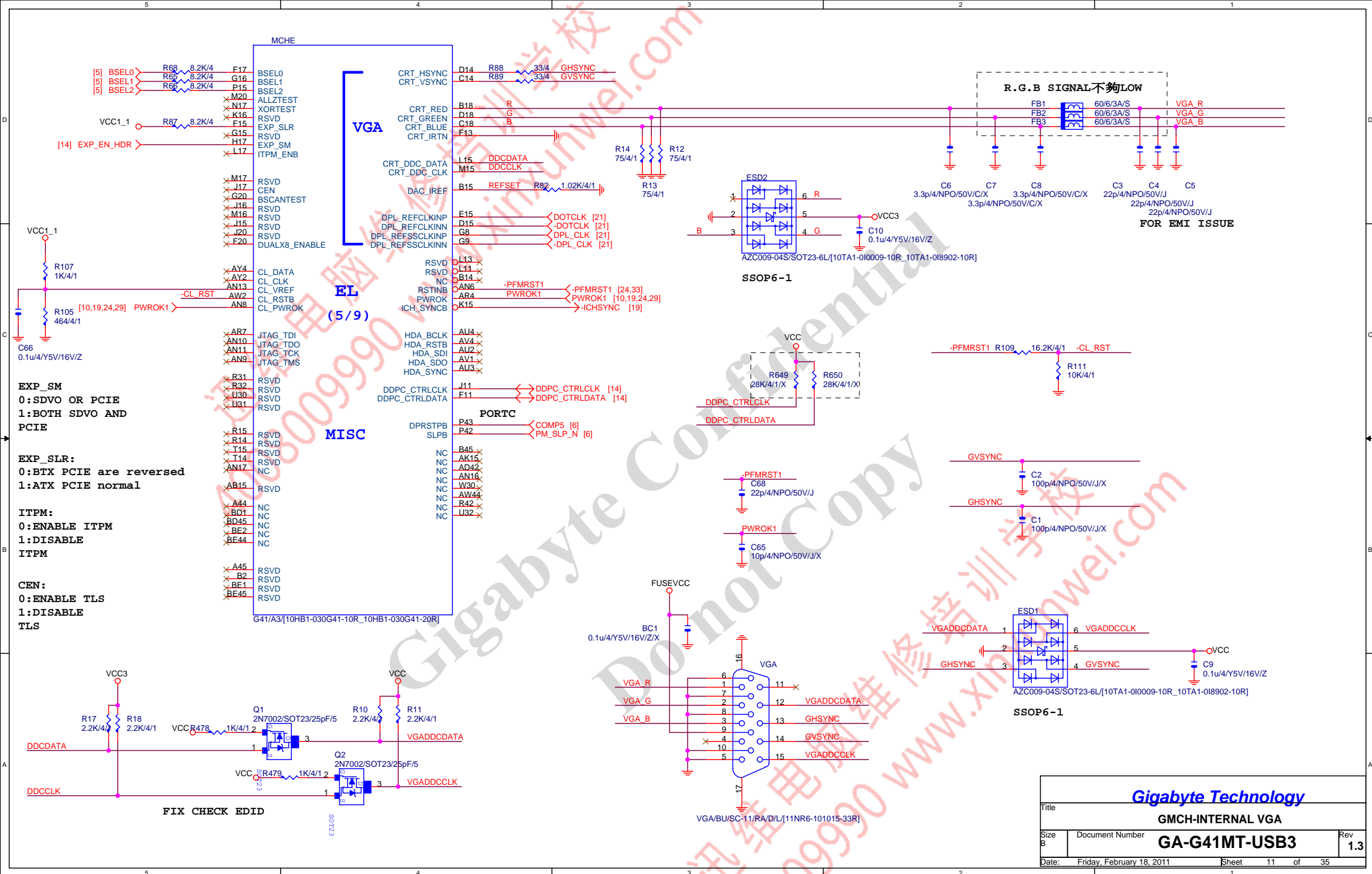
Gigabyte Technology		
Title		
GMCH-HOST		
Size	Document Number	Rev
Custom	GA-G41MT-USB3	1.3
Date:	Friday, February 18, 2011	Sheet 8 of 35





<b><i>Gigabyte Technology</i></b>			
Title <b>GMCH-MEMORY</b>			
Size C	Document Number <b>GA-G41MT-USB3</b>		Rev <b>1.3</b>
Date:	Friday, February 18, 2011	Sheet	9 of 35





MCHH

A12	VSS	AK35
A15	VSS	AK38
A19	VSS	AK39
A27	VSS	AL38
A31	VSS	BB8
A36	VSS	BD12
A40	VSS	BD17
AA1	VSS	BD8
AA8	VSS	BE10
AA11	VSS	BE15
AA12	VSS	BE19
AA13	VSS	BE21
AA20	VSS	BE24
AA22	VSS	BE29
AA24	VSS	BE40
AA26	VSS	C16
AA34	VSS	C3
AA38	VSS	C5
AA40	VSS	D11
AA44	VSS	D16
AB4	VSS	D21
AB6	VSS	D25
AB7	VSS	D26
AB8	VSS	D38
AB11	VSS	D6
AB12	VSS	D7
AB19	VSS	E3
AB21	VSS	E31
AB23	VSS	E41
AB25	VSS	E5
AB27	VSS	E16
AB34	VSS	F2
AB36	VSS	F30
AB39	VSS	F4
AC5	VSS	F42
AC20	VSS	F45
AC22	VSS	G11
AC24	VSS	G17
AC26	VSS	G24
AC45	VSS	G26
AD3	VSS	G29
AD6	VSS	G3
AD9	VSS	G35
AD12	VSS	H1
AD19	VSS	H11
AD21	VSS	H13
AD23	VSS	H15
AD25	VSS	H16
AD27	VSS	H20
AD34	VSS	H25
AD36	VSS	H30
AD39	VSS	H31
AE1	VSS	H33
AE8	VSS	H38
AE11	VSS	H44
AE20	VSS	H7
AE22	VSS	H8
AE24	VSS	H9
AE26	VSS	J3
AE34	VSS	J37
AE38	VSS	J4
AE40	VSS	J5
AE44	VSS	J8
AF6	VSS	J9
AF7	VSS	K11
AF10	VSS	K13
AF11	VSS	K17
AF12	VSS	K20
AF13	VSS	K24
AF33	VSS	K29
AF36	VSS	K33
AF39	VSS	K45
AG5	VSS	L10
AG19	VSS	L16
AG21	VSS	L20
AG23	VSS	U11
AG25	VSS	U12
AG27	VSS	U13
AG45	VSS	U16
AH2	VSS	U17
AH3	VSS	U19
AH4	VSS	U20
AJ20	VSS	U36
AJ22	VSS	U39
AJ24	VSS	U44
AJ26	VSS	U8
AJ36	VSS	W1
AJ39	VSS	W16
AJ44	VSS	W17
AJ45	VSS	A3
		A43
		A6
		B44
		BC1

G41/A3/[10HB1-030G41-10R\_10HB1-030G41-20R]

MCHI

BA5	VSS	EL
BB21	VSS	(9/9)
BB25	VSS	GND
BB28	VSS	
BB8	VSS	
BD12	VSS	
BD17	VSS	
BD8	VSS	
BE10	VSS	
BE15	VSS	
BE19	VSS	
BE21	VSS	
BE24	VSS	
BE29	VSS	
BE40	VSS	
C16	VSS	
C3	VSS	
C5	VSS	
D11	VSS	
D16	VSS	
D21	VSS	
D25	VSS	
D26	VSS	
D38	VSS	
D6	VSS	
D7	VSS	
E3	VSS	
E31	VSS	
E41	VSS	
E5	VSS	
E16	VSS	
F2	VSS	
F30	VSS	
F4	VSS	
F42	VSS	
F45	VSS	
G11	VSS	
G17	VSS	
G24	VSS	
G26	VSS	
G29	VSS	
G3	VSS	
G35	VSS	
H1	VSS	
H11	VSS	
H13	VSS	
H15	VSS	
H16	VSS	
H20	VSS	
H25	VSS	
H30	VSS	
H31	VSS	
H33	VSS	
H38	VSS	
H44	VSS	
H7	VSS	
H8	VSS	
H9	VSS	
J3	VSS	
J37	VSS	
J4	VSS	
J5	VSS	
J8	VSS	
J9	VSS	
K11	VSS	
K13	VSS	
K17	VSS	
K20	VSS	
K24	VSS	
K29	VSS	
K33	VSS	
K45	VSS	
L10	VSS	
L16	VSS	
L20	VSS	
U11	VSS	
U12	VSS	
U13	VSS	
U16	VSS	
U17	VSS	
U19	VSS	
U20	VSS	
U36	VSS	
U39	VSS	
U44	VSS	
U8	VSS	
W1	VSS	
W16	VSS	
W17	VSS	
A3	VSS	
A43	VSS	
A6	VSS	
B44	VSS	
BC1	VSS	

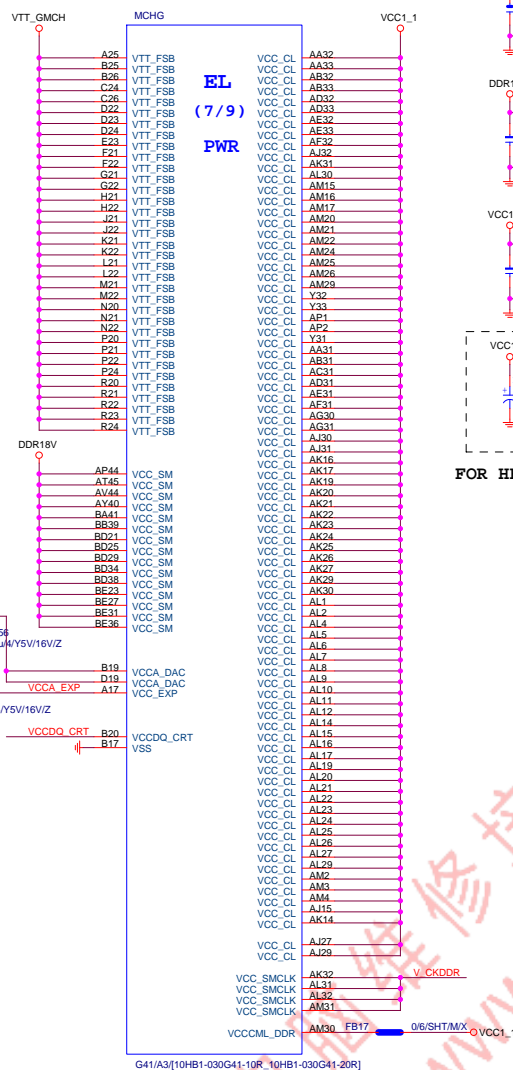
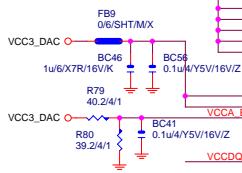
G41/A3/[10HB1-030G41-10R\_10HB1-030G41-20R]



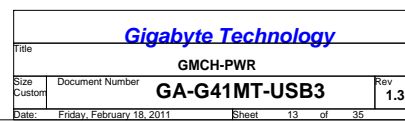
BGASINK445A-L GRAY FOR G41 20mm

Gigabyte Technology			
Title	GMCH-GND		
Size	Document Number	GA-G41MT-USB3	Rev
Custom			1.3
Date:	Friday, February 18, 2011	Sheet	12 of 35

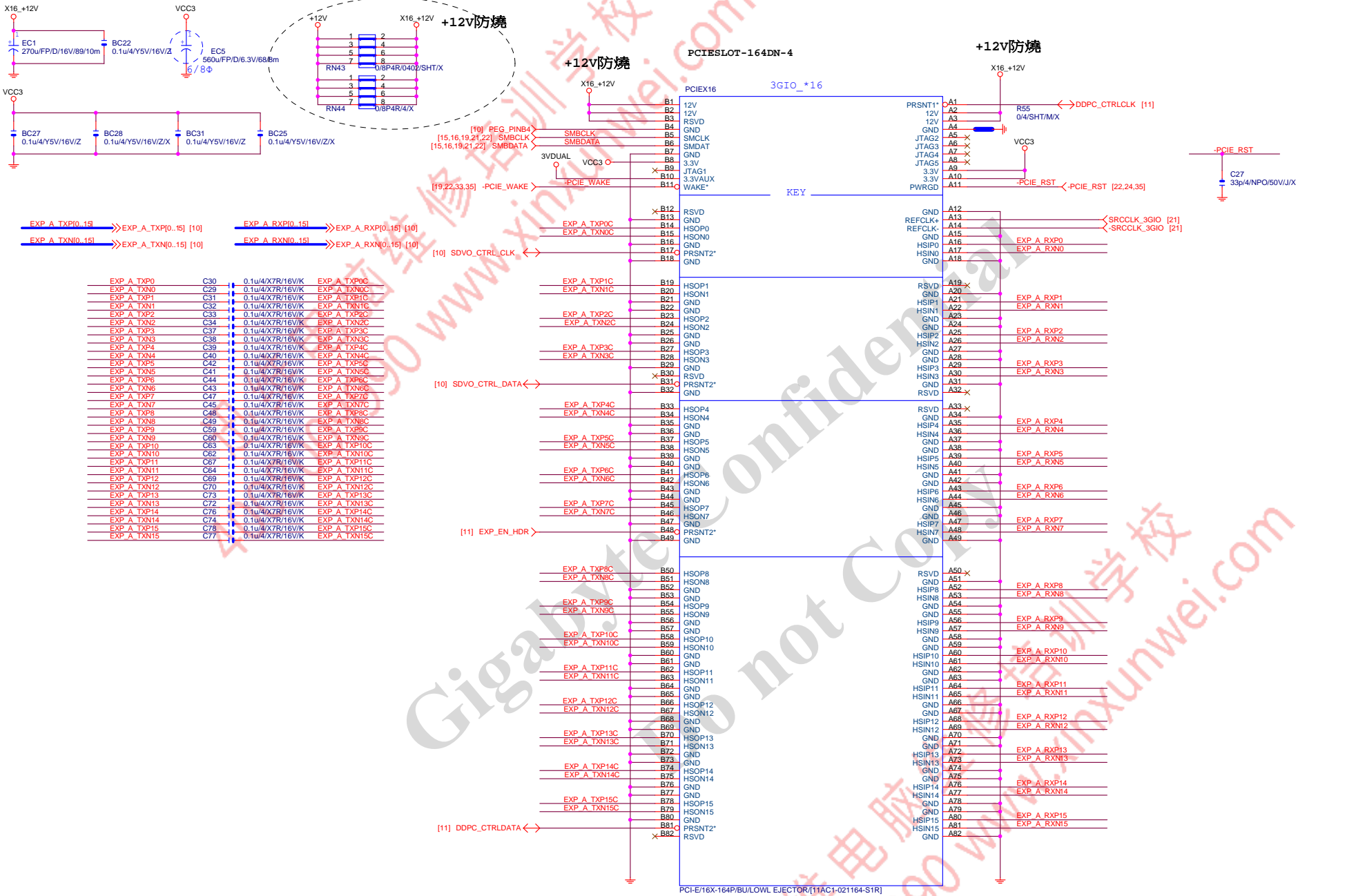


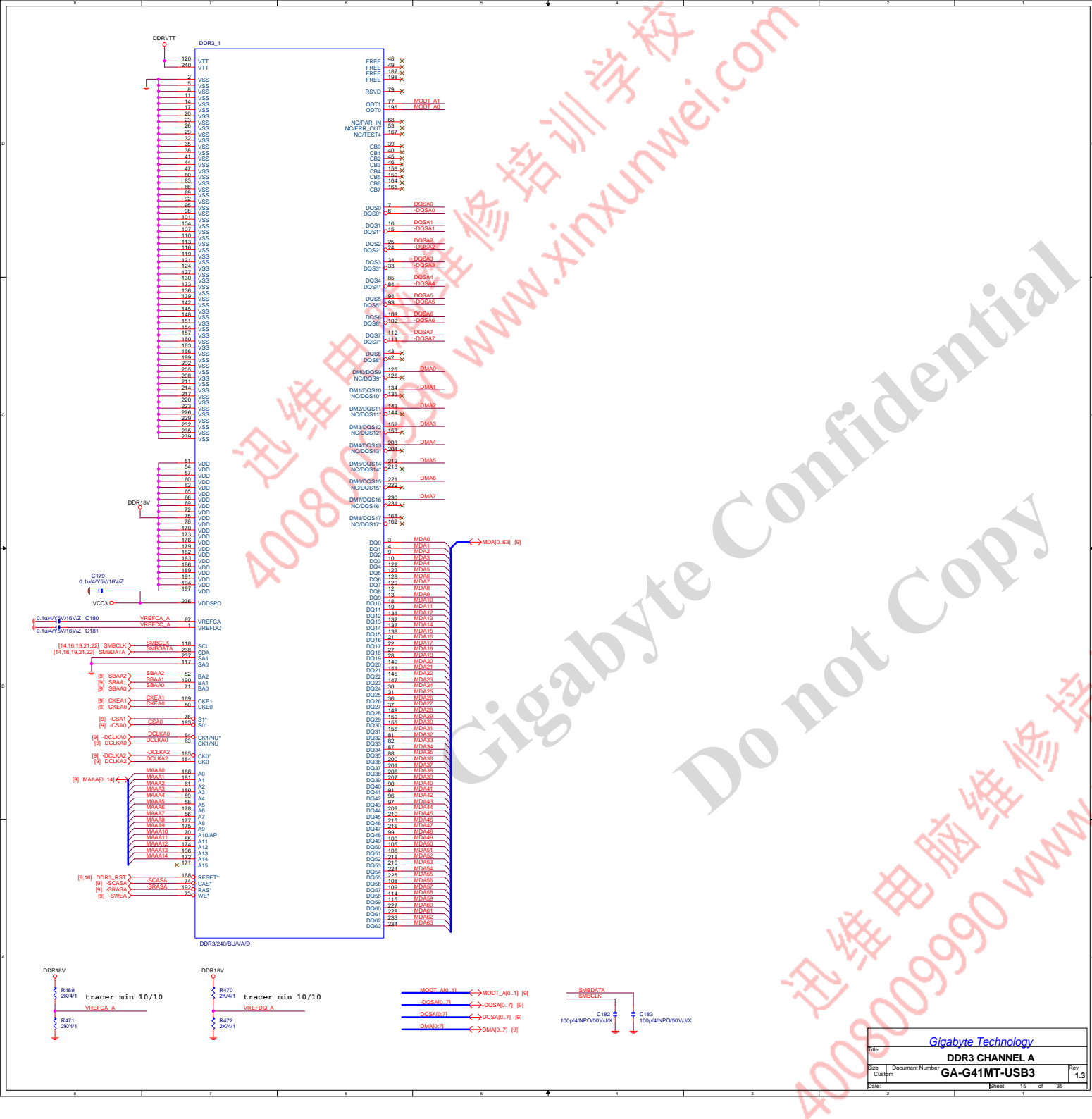


CLOSE北橋(注意震盪水波紋)

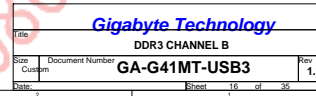




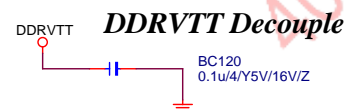
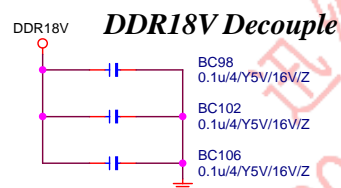
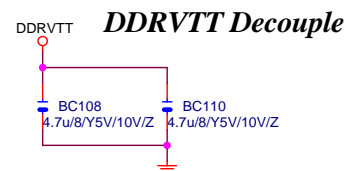
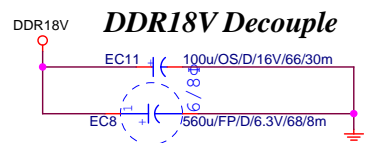




Gigabyte Technology			
DDR3 CHANNEL A			
GA-G41MT-USB3			
File	Document Number	Rev	1.3
Size	Custom		
Date		Sheet	15 of 35

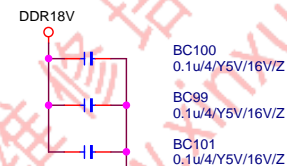


## DDR TERMINATION CHANNEL A

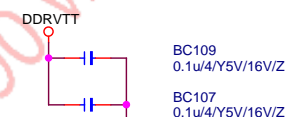


## DDR TERMINATION CHANNEL B

### DDR18V Decouple



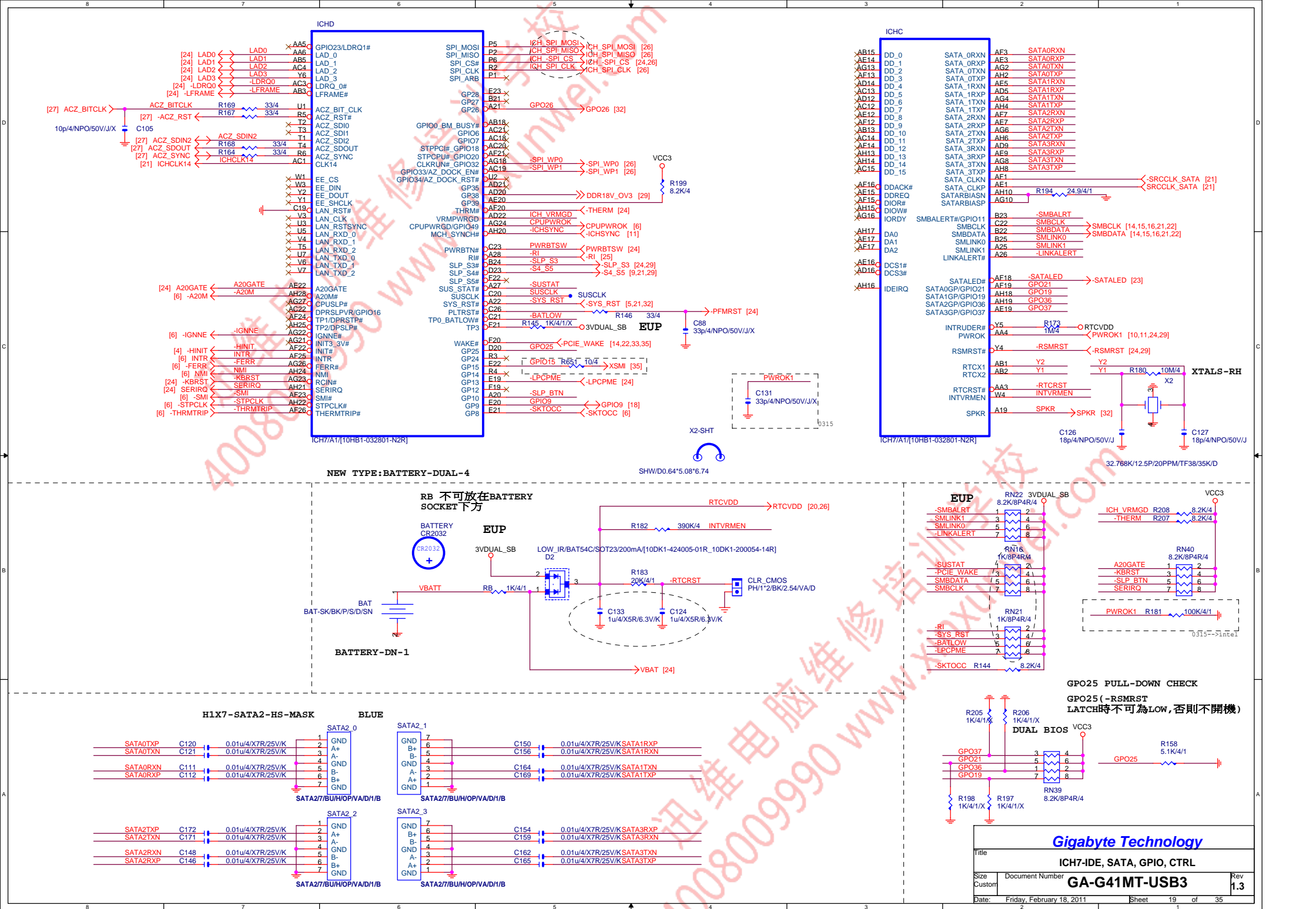
### DDRVTT Decouple

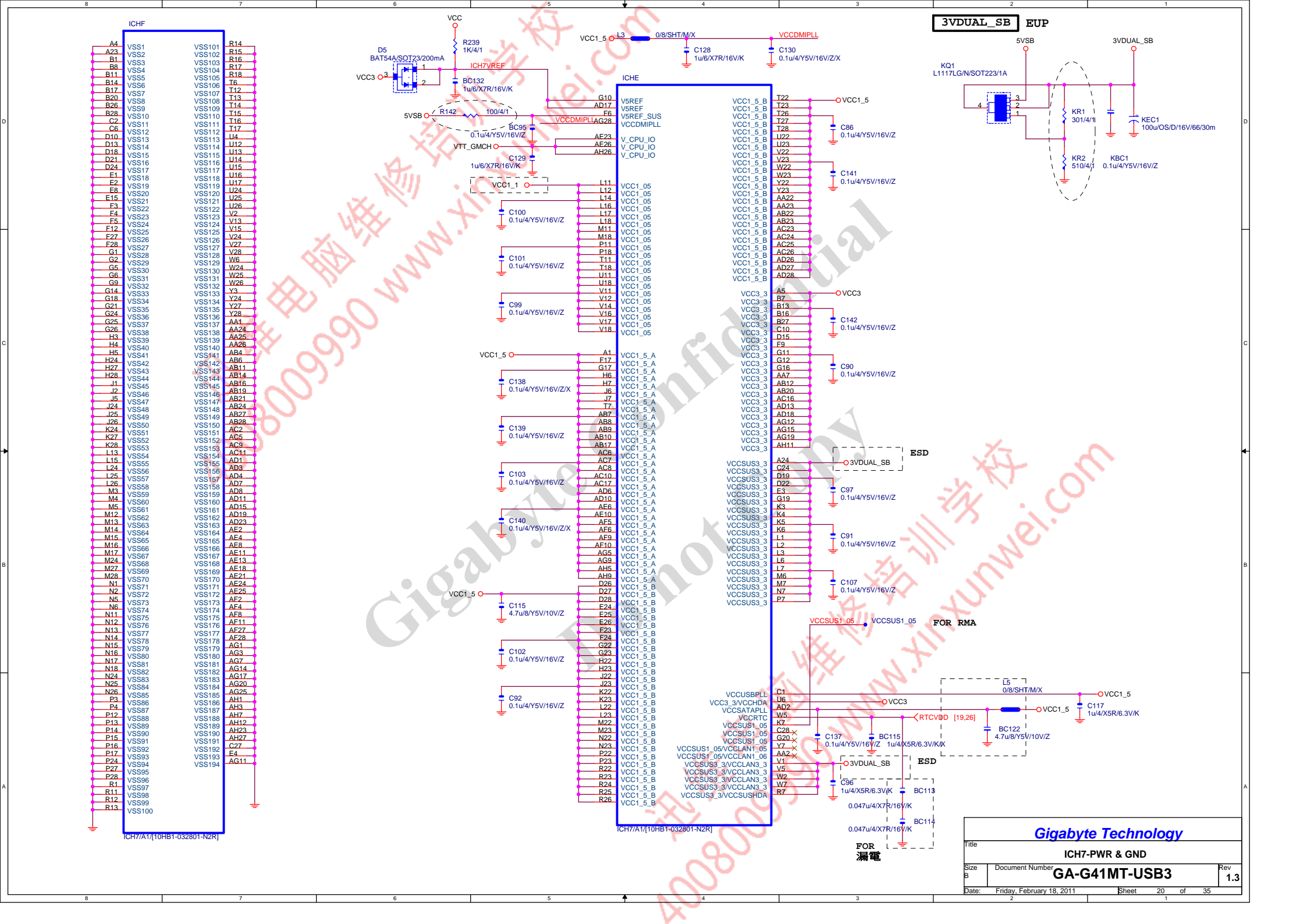


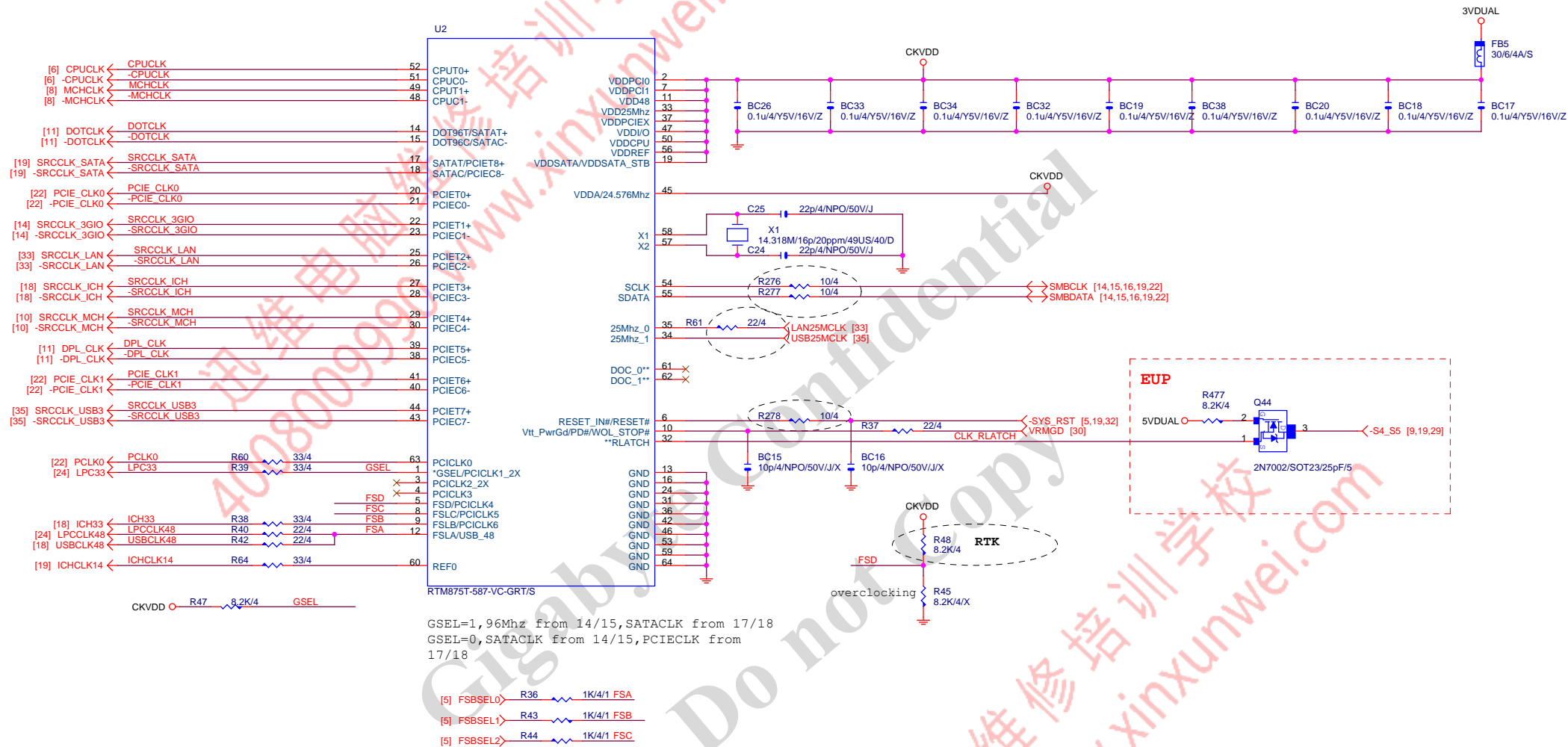
Gigabyte Technology			
Title		DDRII TERMINATOR	
Size Custom	Document Number	GA-G41MT-USB3	Rev 1.3
Date:	Friday, February 18, 2011	Sheet 17 of 35	











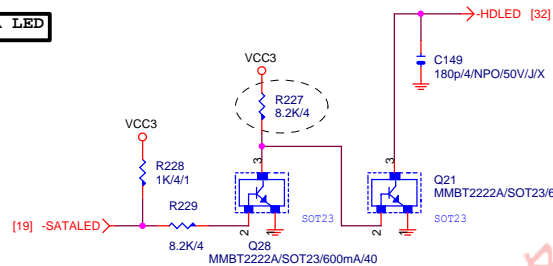
Gigabyte Technology

Title					Rev 1.3
CK505 CLK GEN					
Size Custom	Document Number				1.3
GA-G41MT-USB3					
Date:		Friday, February 18, 2011	Sheet	21	of 35





IDE/SATA LED
--------------



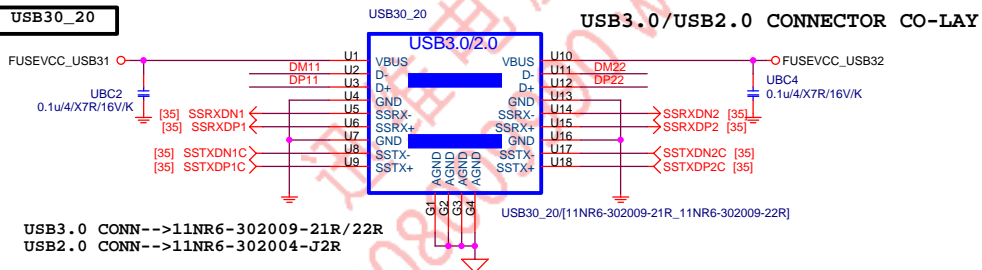
## IDE RESET

N/A

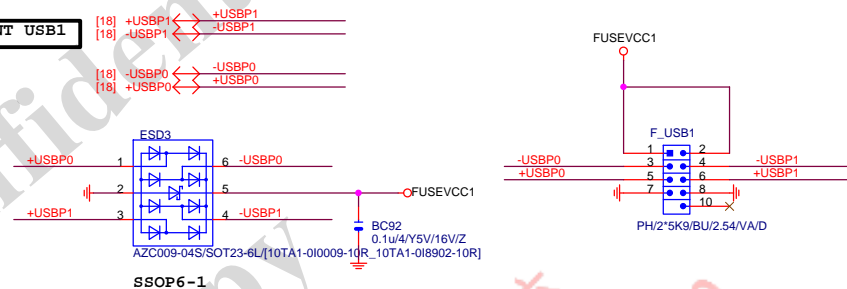
**FLOPPY**

N/A

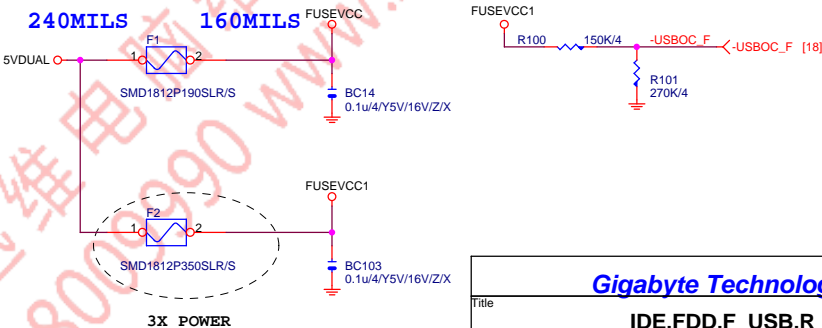
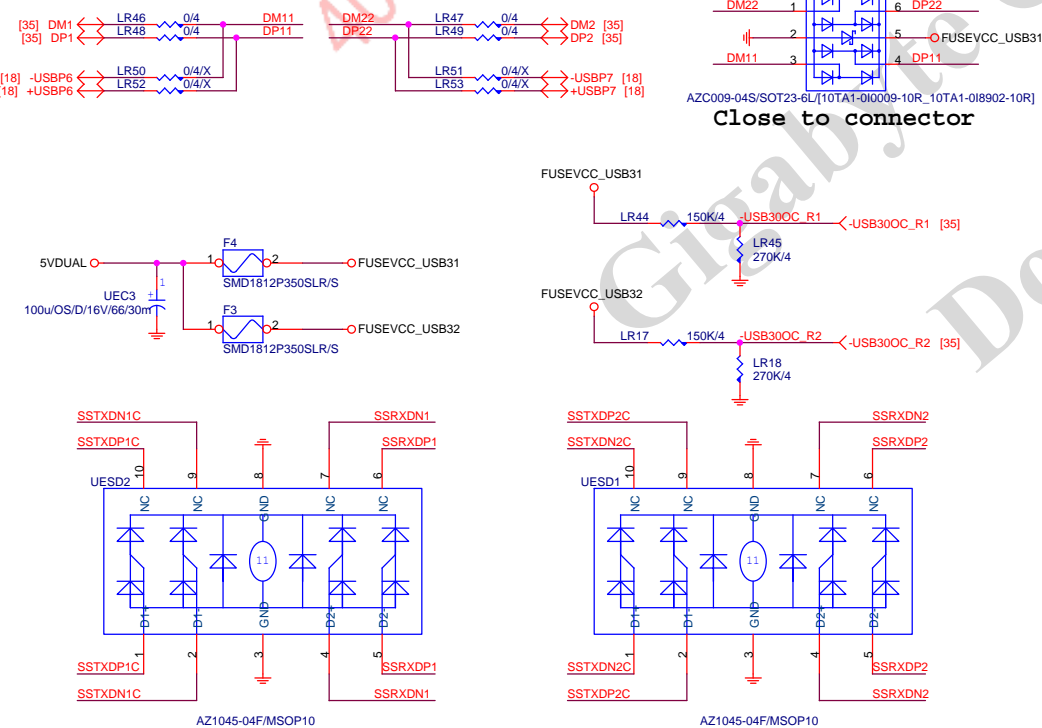
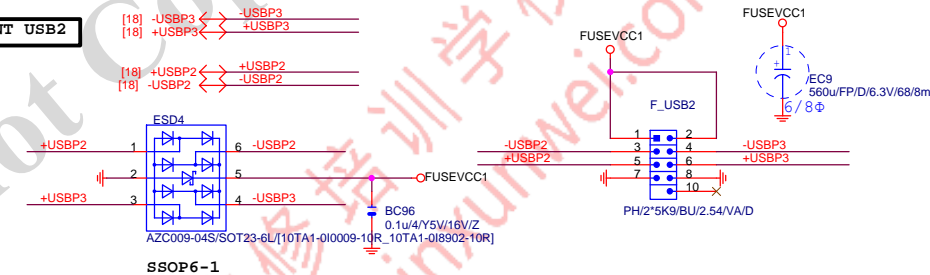
USB30\_20



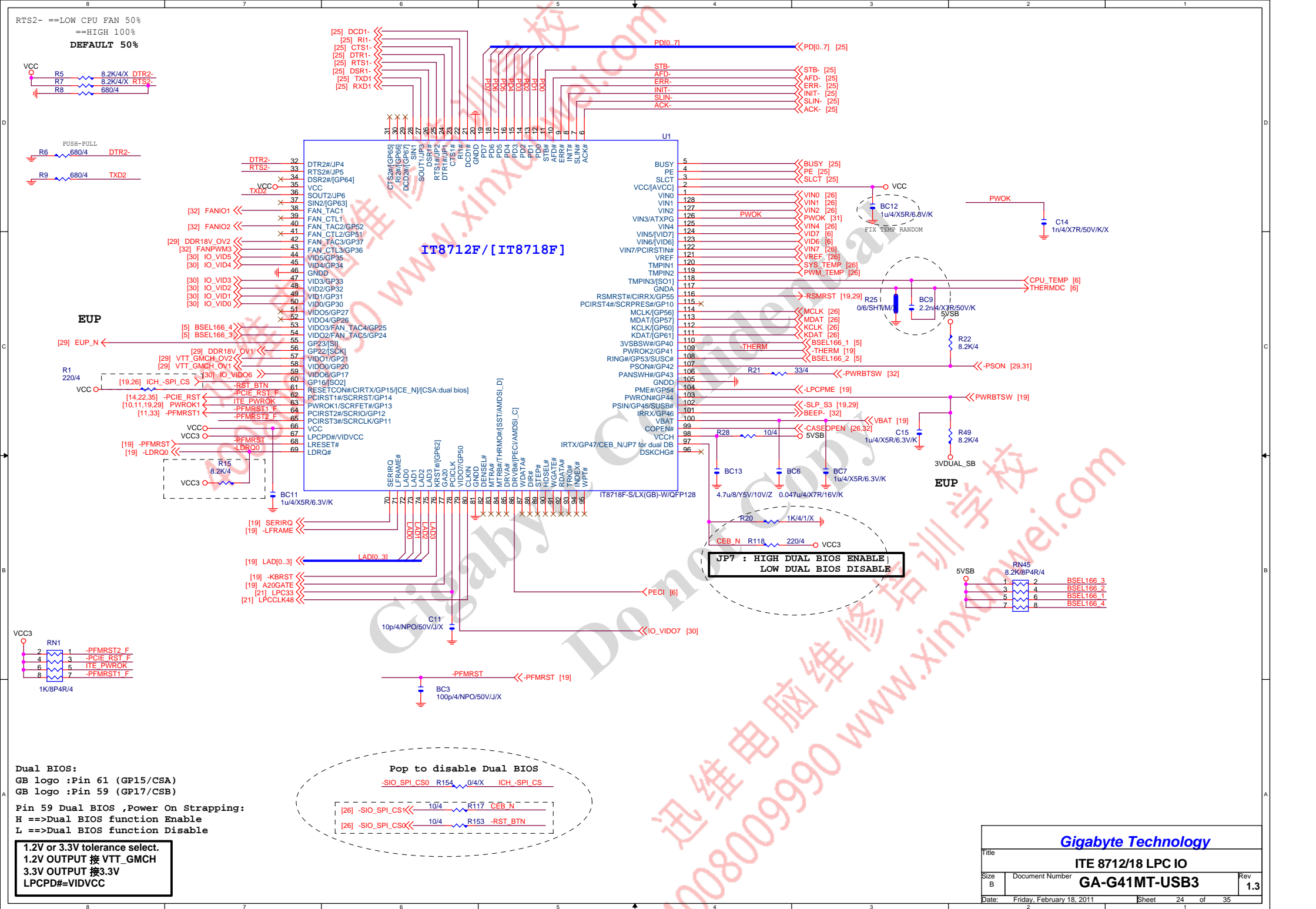
FRONT USB1



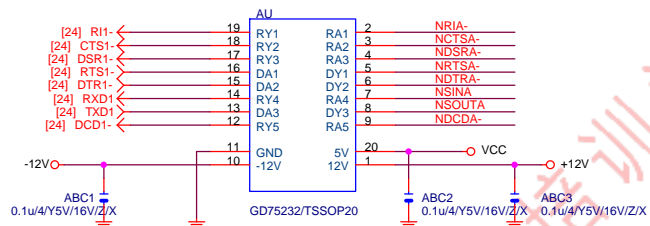
FRONT USB2



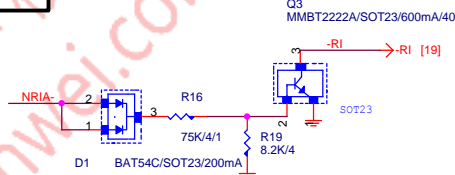




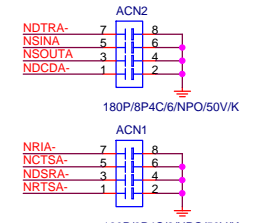
## COMA



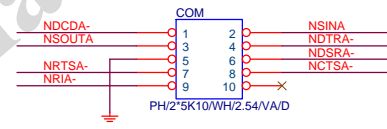
## RING IN



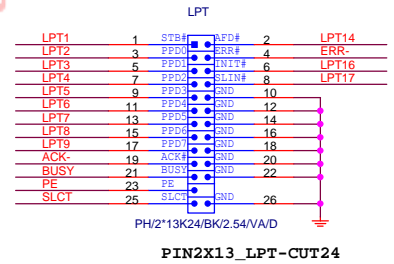
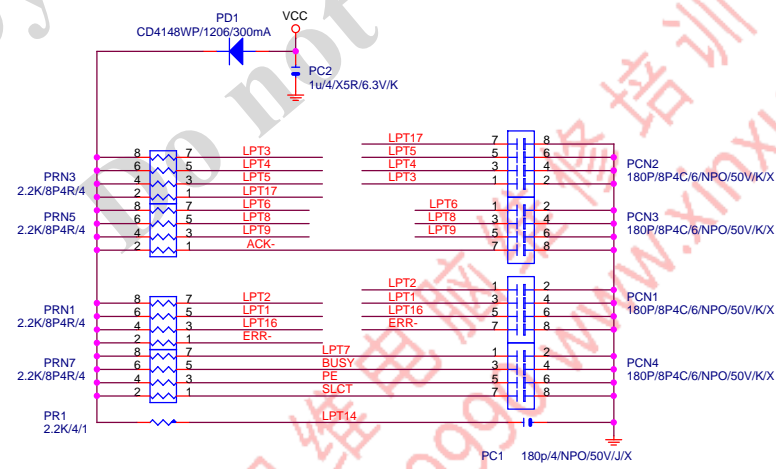
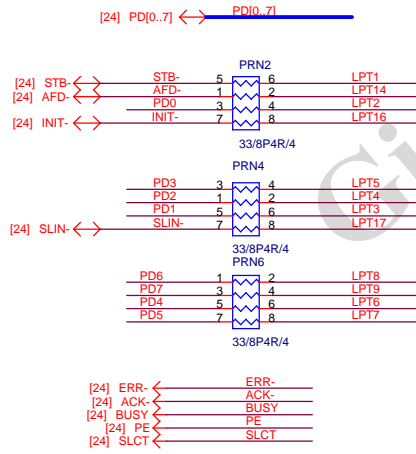
## EXTERNAL COMA



PLACE NEAR COM CONNECTOR



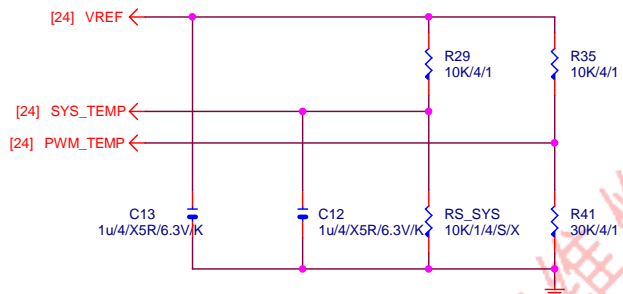
## LPT PORT



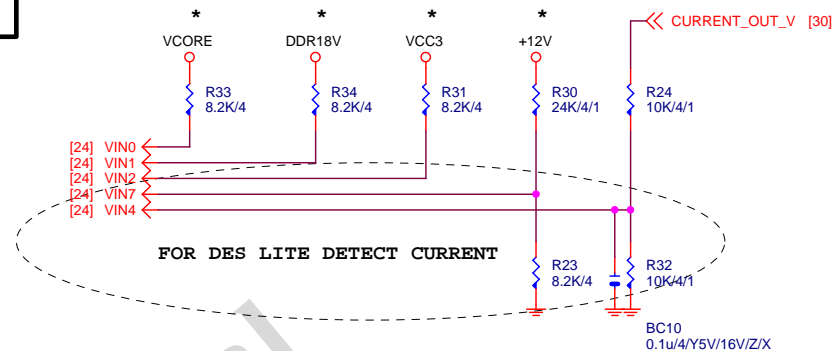
Gigabyte Technology

Title			
COM & LPT PORT			
Size	Document Number	GA-G41MT-USB3	
B			Rev 1.3
Date:	Friday, February 18, 2011	Sheet 25	of 35

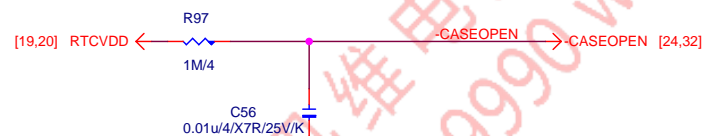
## TEMP H/W MONITOR



## VOLTAGE-- H/W MONITOR

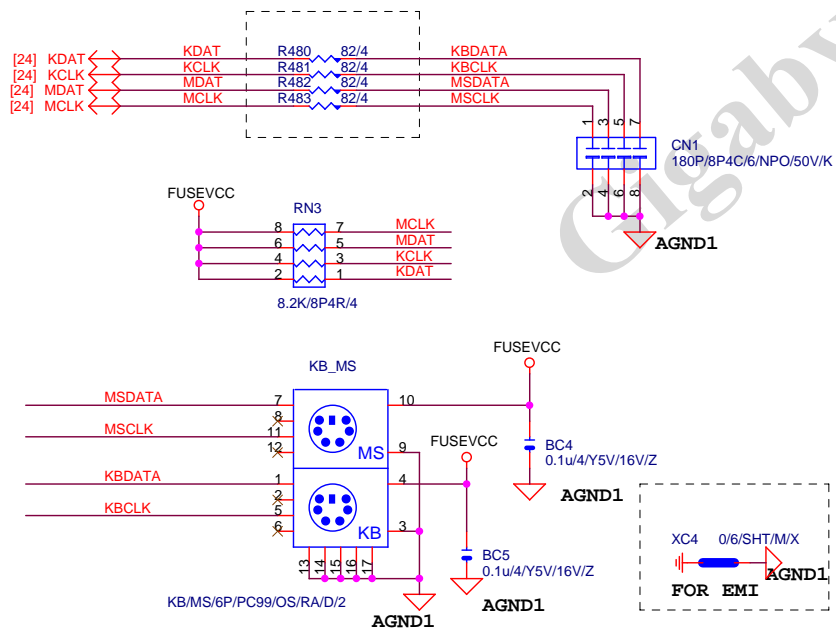


## CASE OPEN

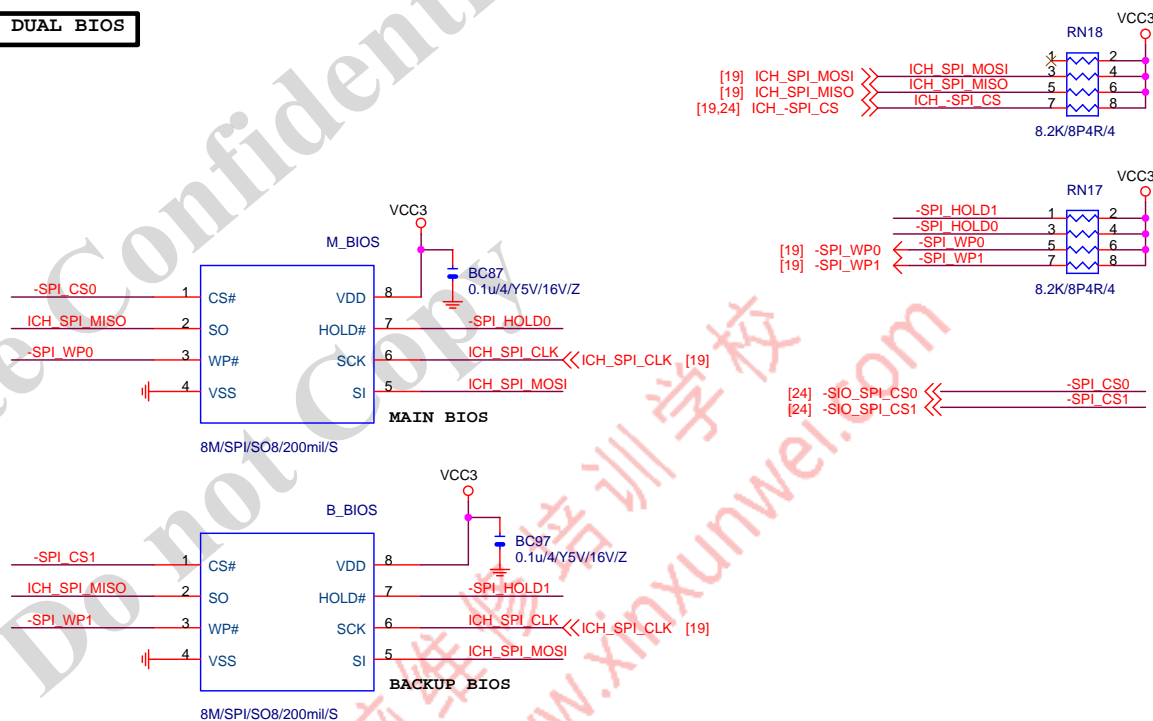


Case Open Circuits

## KB/MS



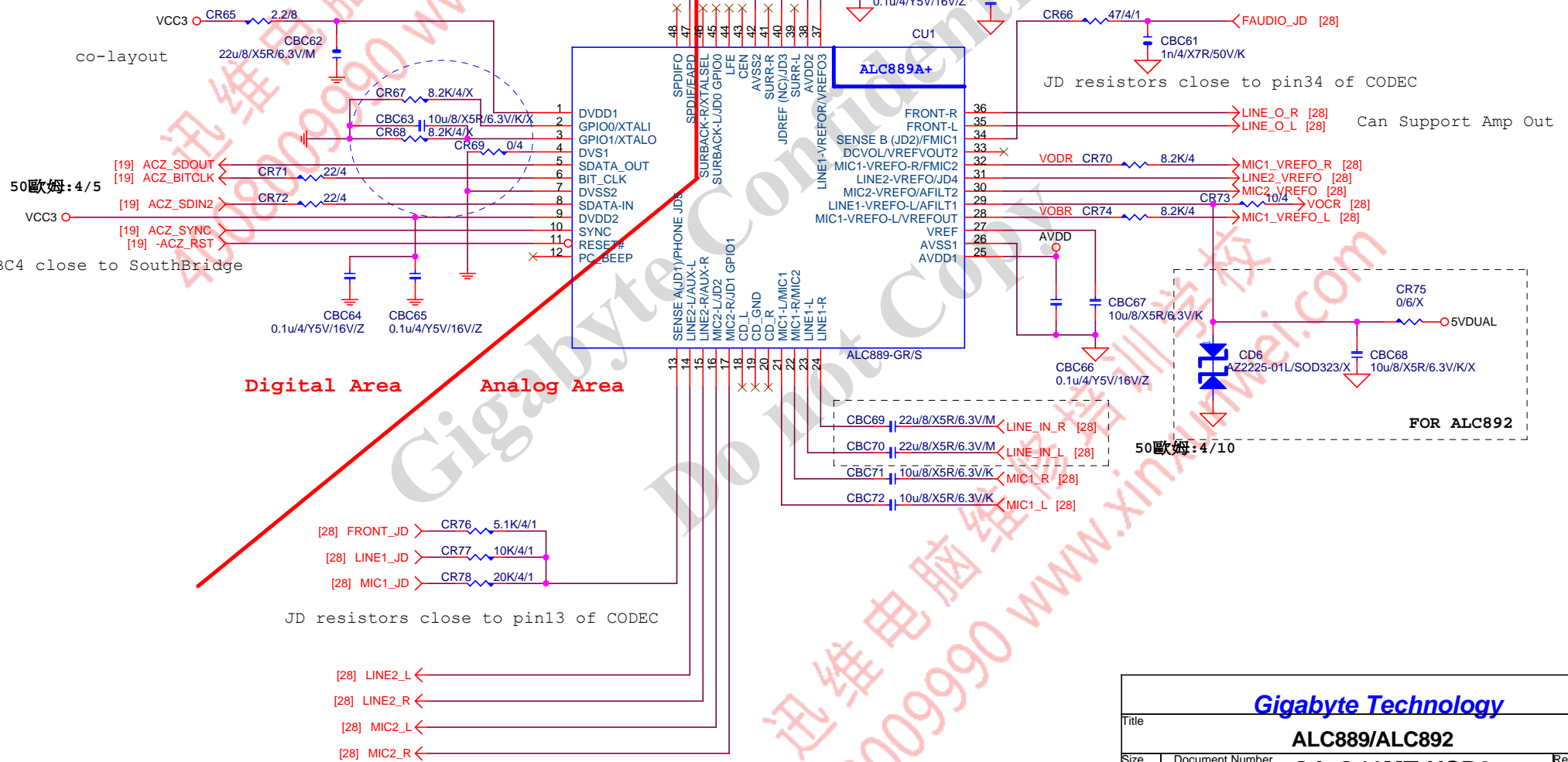
## DUAL BIOS



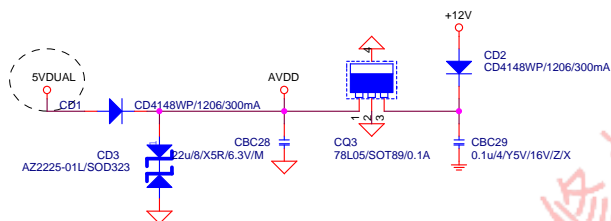
Gigabyte Technology

Title			HW-MONITOR/CI/KB/MS/BIOS	
Size	Document Number	GA-G41MT-USB3		Rev
Custom				1.3
Date:	Friday, February 18, 2011	Sheet	26	of 35

	ALC888B	ALC888-VA	ALC889A	ALC888-VD	ALC892
CR59	X	O	O	O	O
CR53, 58	X	X	O	X	X
CR56	O	O	O	O	X
CR63	X	X	X	X	O
CR34	20K/1%	20K/1%	20K/0.1%	20K/1%	20K/1%



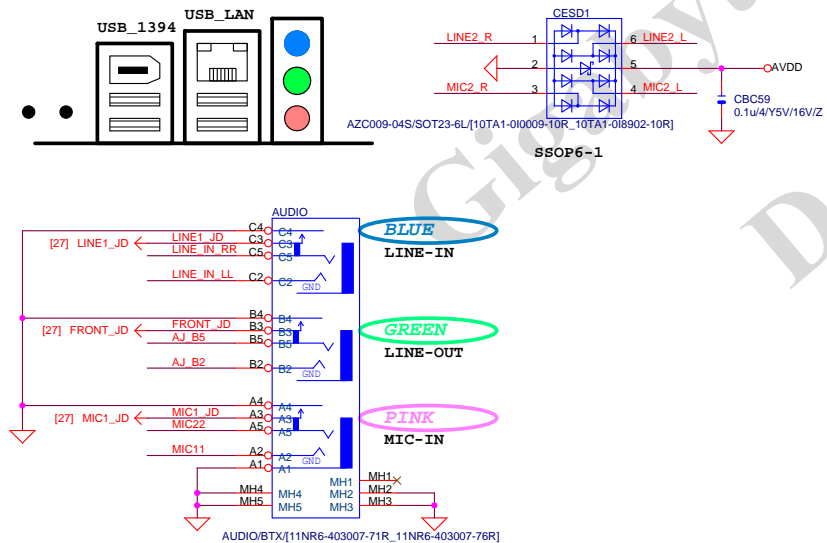
## CODEC POWER/EMI PAD



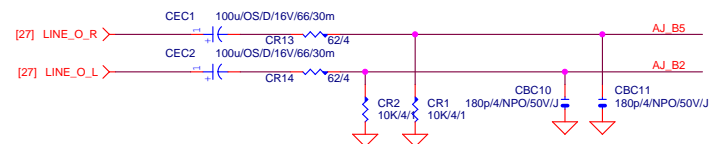
## CD IN N/A

## SPDIF IN N/A

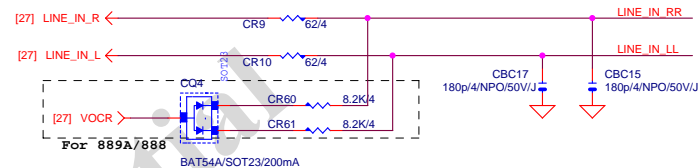
## AZALIA JACK



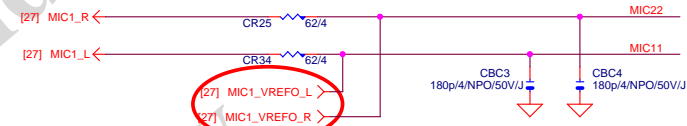
## LINE-OUT



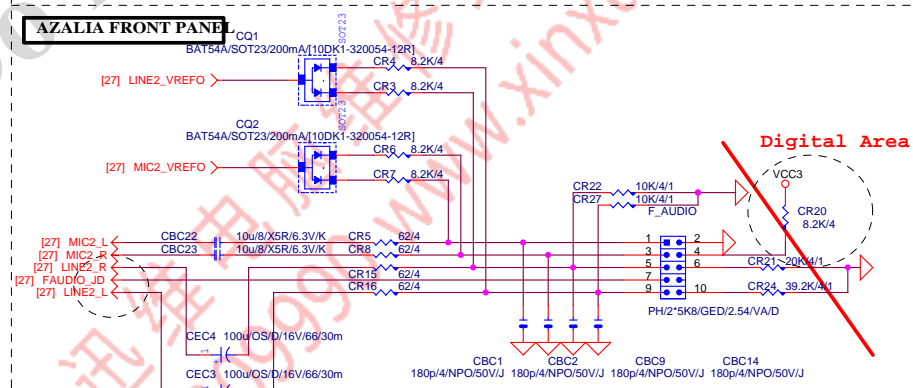
## LINE-IN



## MIC-IN



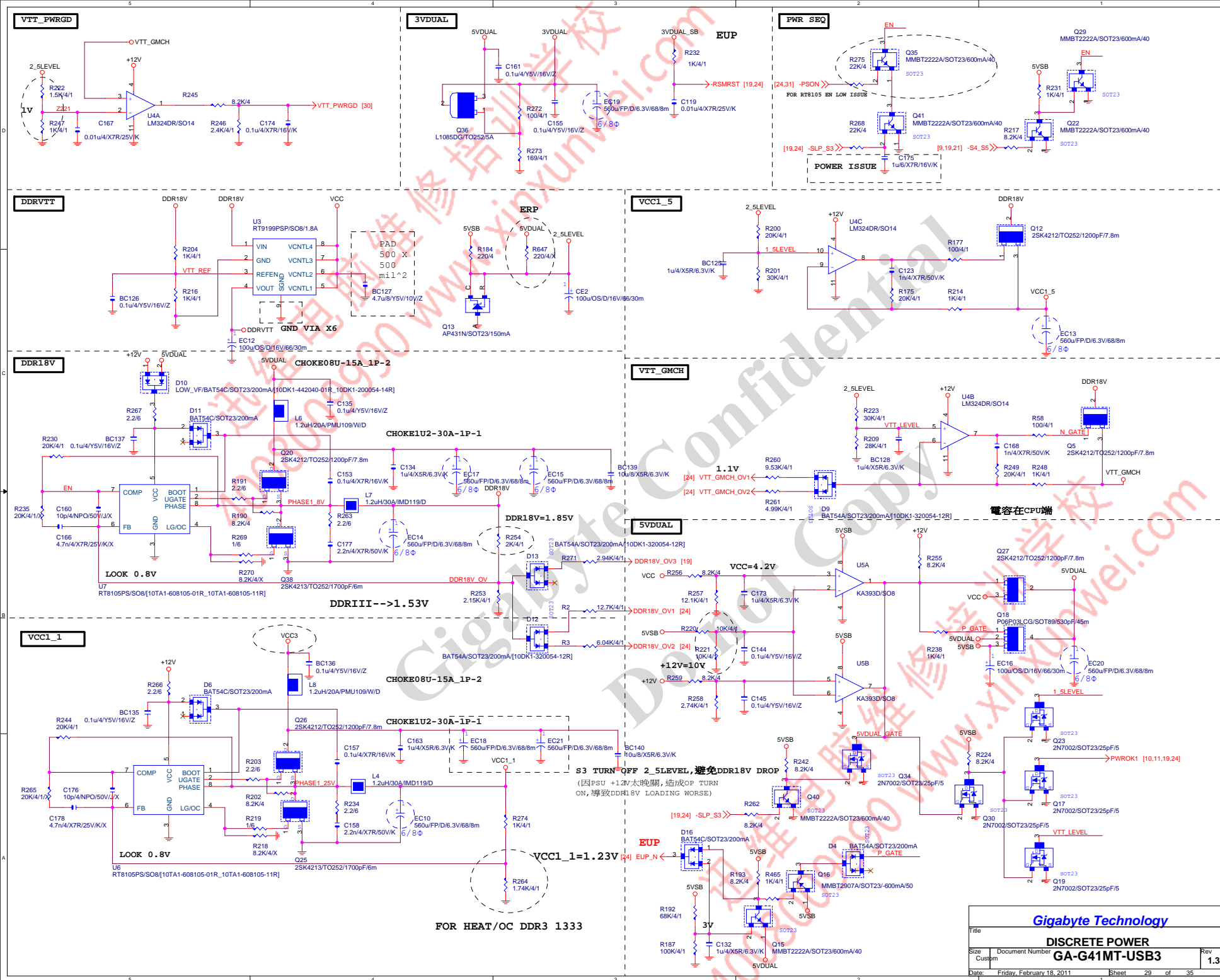
## AZALIA FRONT PANEL

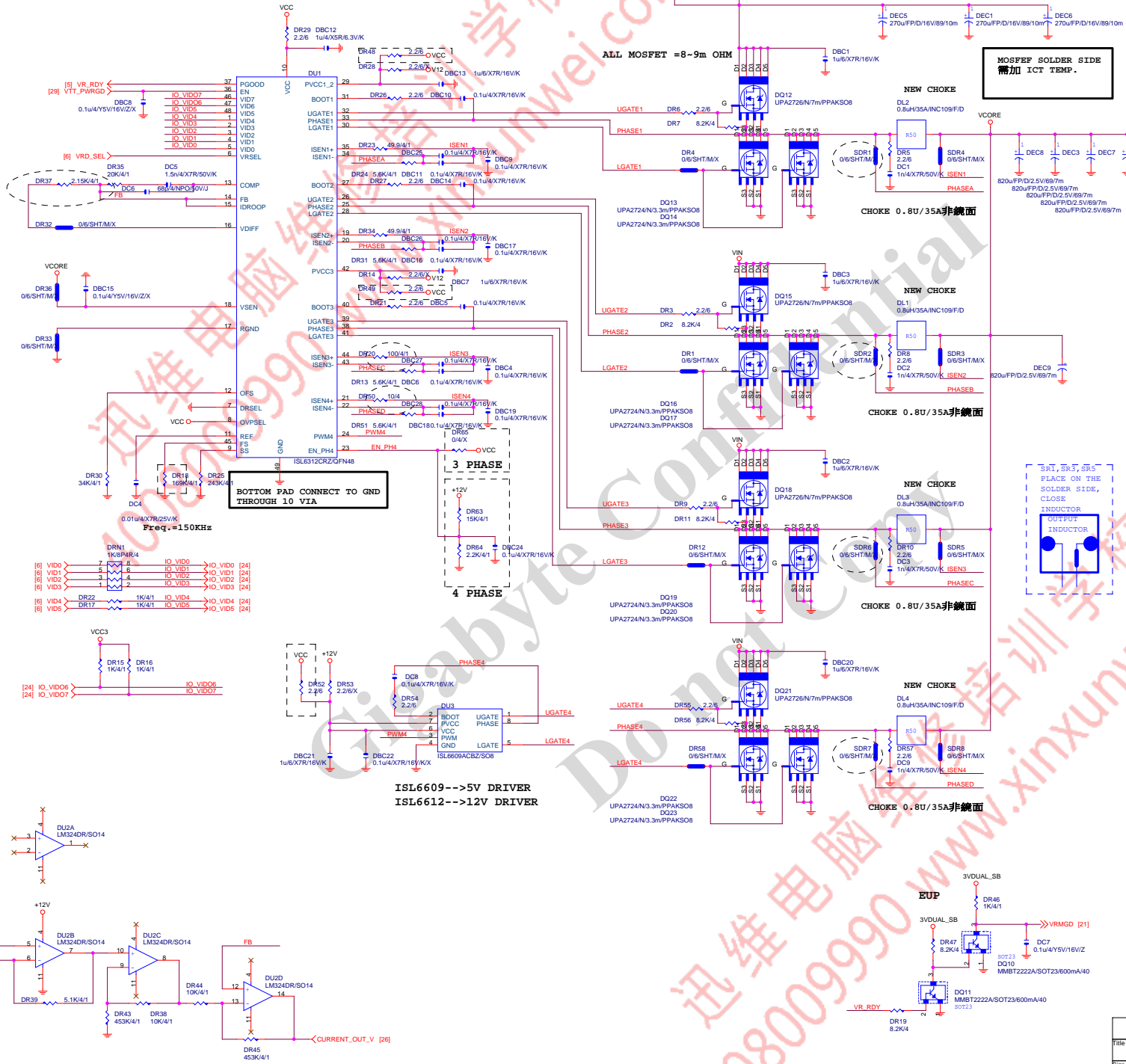


Gigabyte Technology

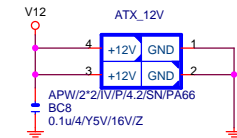
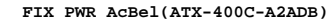
Title			
AUDIO JACK			
GA-G41MT-USB3			
Size	Document Number	Rev	1.3
Custom			
Date:	Friday, February 18, 2011	Sheet	28 of 35



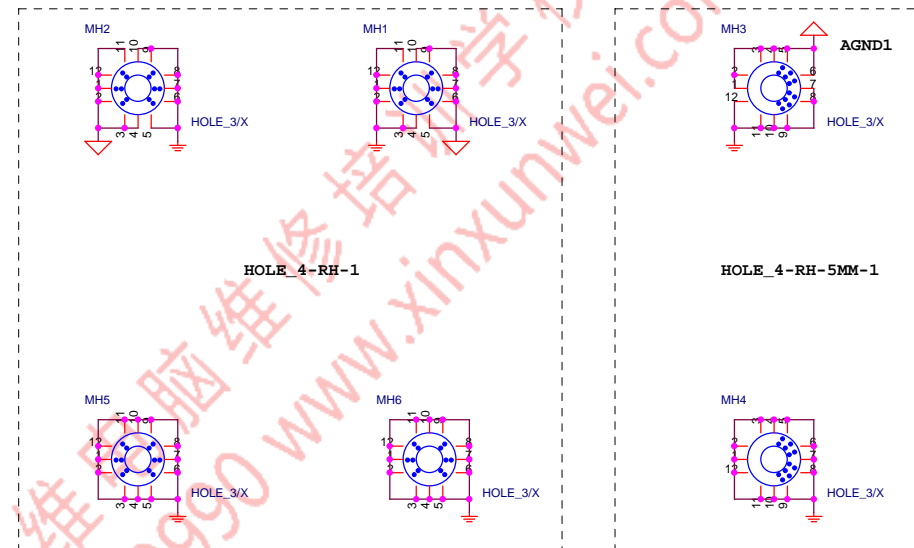
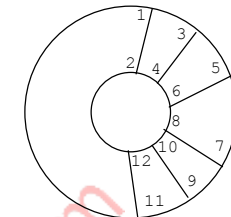




## ATXPWR\_24-4

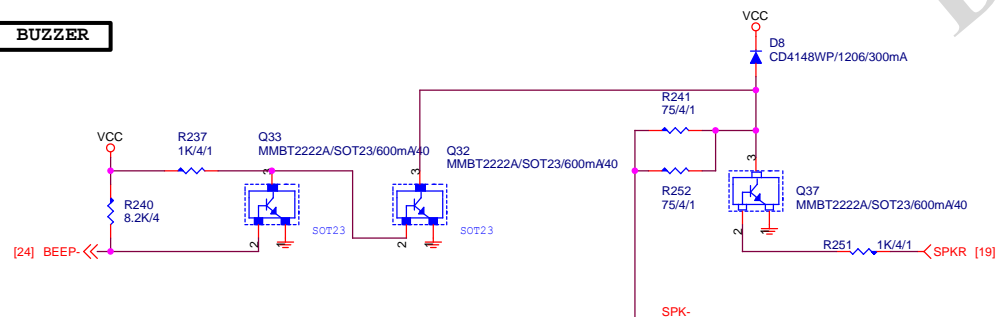


ATX\_4-5

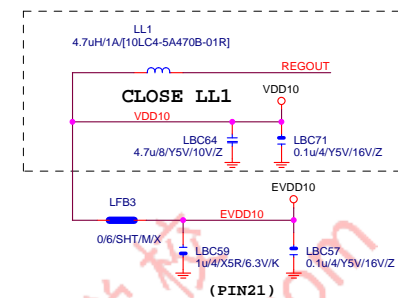
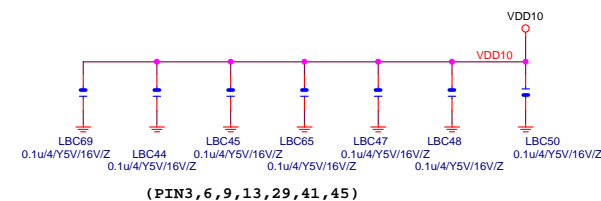
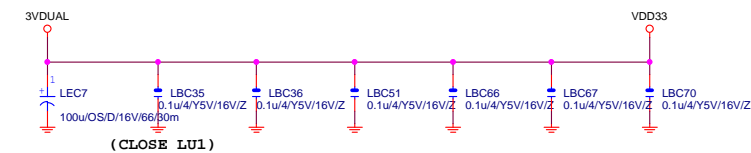
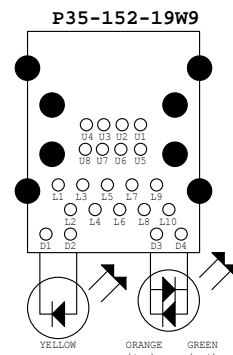
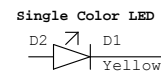
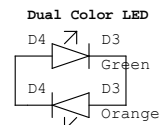
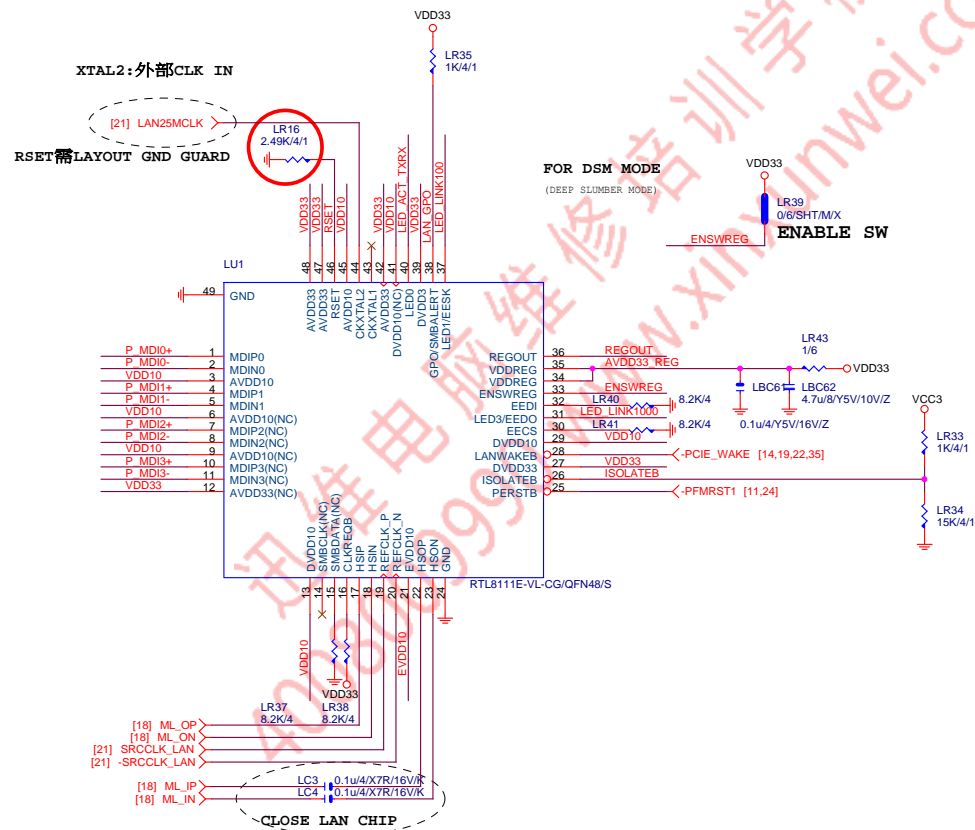


Title			
ATX POWER CONNECTOR			
Size B	Document Number	GA-G41MT-USB3	Rev 1.3
Date:	Friday, February 18, 2011	Sheet 31 of 35	

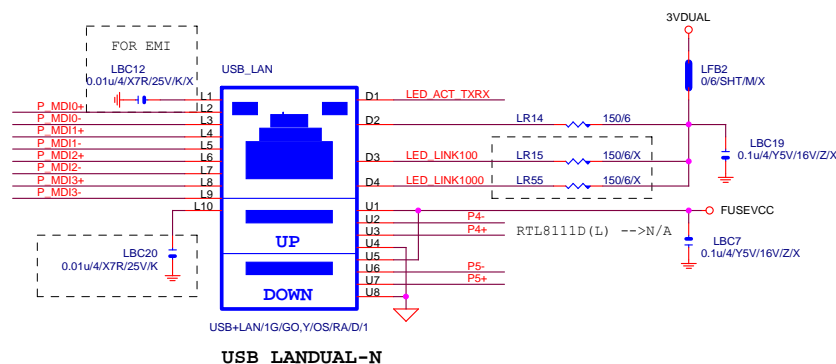
## INTEL FRONT PANEL



## PCIE-1G LAN



## USB\_LAN CONNECTOR



USB\_LAN

